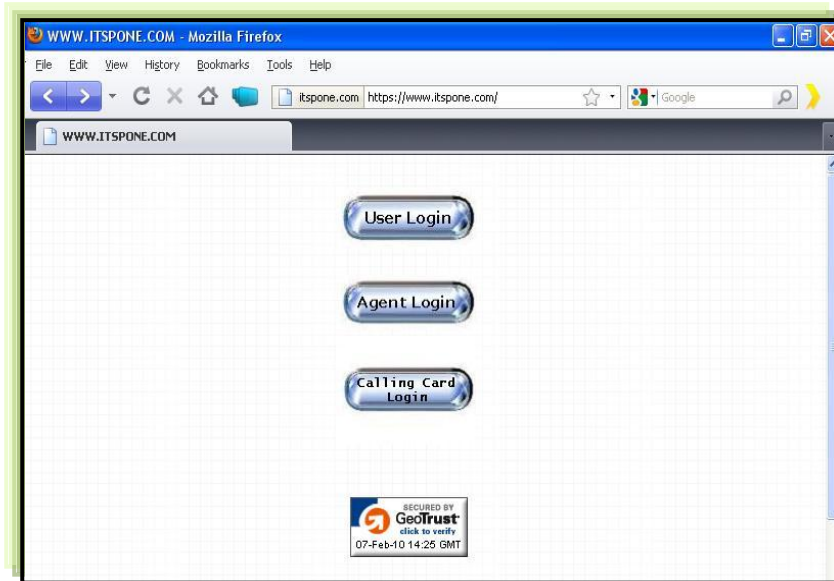




# ITSP Platform Guide

## How to manage your Device



AwalFon Co.

(TEL): +967-1289900, (FAX): +967-1482515, (BESTip free):800700#

(WEB): [www.bestip.me](http://www.bestip.me) , [www.bestipme.com](http://www.bestipme.com) or [www.bestipme.net](http://www.bestipme.net)

(EMAIL): [support@ipvon.net](mailto:support@ipvon.net) – Sana'a, Yemen

حقوق الطبع والنسخ محفوظة لدى شركة أول نت 2008 - 2009

You are login as  Please click left button to modify personal record.

## ITSP Account Support

Account Balance :  Points

Check Call Detail Record	<input type="button" value="GO"/>	Manage your device Setup	<input type="button" value="Device Management"/>
ITSP Transaction	<input type="button" value="Re-Charge Card"/>		
	<input type="button" value="Check Credit"/>		
Message Board	<input type="button" value="GO"/>		
Logout	<input type="button" value="Logout"/>		

### Device ID Button

- **Function:** To modify personal record including device password, Personal information and Address information.

## ITSP Account Support

### Check Call Detail Record

- **Function:** To check the full details of your outgoing calls; date, time, tel. no. , duration and charge.
- **The steps:**
  1. Enter this website [www.itspone.com](http://www.itspone.com)
  2. Click "User Login"
  3. Enter "Device ID" and "Password"
  4. Click "GO" to Check Detail Record
  5. Setup the date or designate telephone number
  6. Choose which Call Type you want to query
  7. Click "Submit" to query CDR

## Device management

- **Function:** To manage your device

### Phone book

- **Function:** To make speed dial and Hotline. Speed dial is property to dial quickly specific number, for example if you assign device ID 63xxxxxx in phone book with speed code 12, you can dial only 12 every time you want to dial 63xxxxxx . While hotline is dialing specific ID or tel. no. once left the phone handset.

- **The steps of speed dial:**

1. Enter this website [www.itspone.com](http://www.itspone.com)
2. Click "User Login"
3. Enter "Device ID" and "Password"
4. Click "Device Management"
5. Click "Phone Book"
6. Click "Insert Data"
7. Enter the details:  
"Speed call": any number (Ex.: 12)  
"Act as hotline": Disable  
"Tel no.": Phone number or device ID that you want  
Note: if the number is BESTip select Device, otherwise select ITSP phone
8. Click "Submit"

- **The steps of Hotline:**

1. From system setting change Hotline option in the device to ON.
2. Enter this website [www.itspone.com](http://www.itspone.com)
3. Click "User Login"
4. Enter "Device ID" and "Password"
5. Click "Device Management"
6. Click "Phone Book"
7. Click "Insert Data"
8. Enter the following details:  
"Speed call": any number (Ex.: 111)  
"Act as hotline": 1 [in case of FXO, act as hotline: 2]  
"Tel no.": Phone number or device ID that you want  
Note: if the number is BESTip select Device, otherwise select ITSP phone
9. Click "Submit"

### Device trustee list

- **Function:** To protect your FXO port from unauthorized access or filter unwanted disturbance from unknown party, you may setup Device Trustee list to protect your device. Only the listed ID number can reaches your device.

- **The steps:**

1. Enter this website [www.itspone.com](http://www.itspone.com)
2. Click "User Login".
3. Enter "Device ID" and "Password".
4. Click "Device Management".
5. Click "Device Trustee List". Select the status "Enable".
6. Click Insert Data to create records.
7. Enter the devices ID # allowed to call this device then Click "Submit" to confirm.

**Call redirect list**

- **Function:** To redirect the incoming calls at time period you want when the device is offline or online according to your interest.

**Restart device**

- **Function:** To restart the device remotely

**Software upgrade**

- **Function:** To send the software command to device in order to get the latest version of software.

**Check Credit**

- **Function:** To check your account balance.

**Message Board**

- **Function:** To see the news that related to company if found.



You will enjoy a Totally **Free** Calls between BESTip ATA device to other BESTip ATA Device